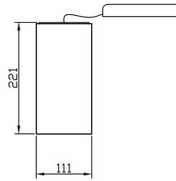




Dimensional Drawings



With remote driver

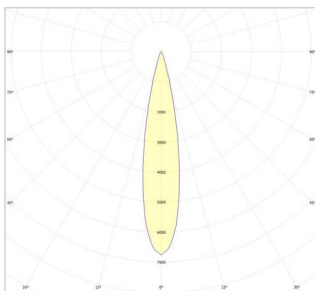


With Internal driver

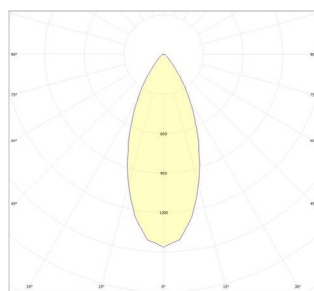
VIRTUO 3D

The Virtuo 3D surface-mounted downlight by Oxbridge Lighting combines cutting-edge 3D printing with high-efficiency performance. With a compact 111mm diameter and RA90 CRI as standard, it offers exceptional efficiency of up to 132 LLM/CW—exceeding 100 LLM/CW when multiple luminaires share a driver. Available in various colour temperatures and beam angles, it ensures design flexibility. Beyond standard finishes, Virtuo 3D embraces sustainability by enabling custom, 3D-printed designs in unique materials such as wood, stone, and cork. Options for remote, integral, or track-mounted drivers further enhance its versatility, making it the ideal choice for tailored, eco-conscious lighting solutions.

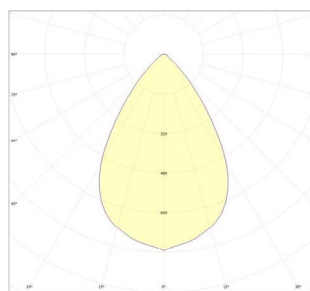
Polar Curves



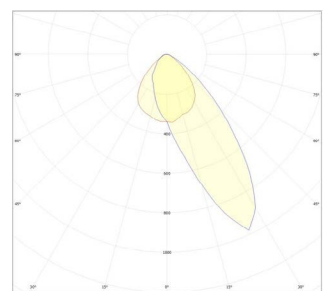
20° Beam Distribution



42° Beam Distribution



67° Beam Distribution



Wall Washing Beam

PRODUCT FAMILY TECHNICAL

Product Code	: VIR3DXXXXXXC90XXXXXXXX
Product Power	: 8.2W, 11.8 & 15.5W
Available CCTs	: 2700K, 3000K, 4000K
SDCM Binning	: 3
Rated CRI	: 90
Rated Lifetime	: L90-B10 - 50,000 Hrs @ Ta - 25°C

PRODUCT FAMILY PERFORMANCE

Colour Temperature	Beam Angle	Reflector	Luminaire Lumens	Connected Load	Efficacy (LLM/
2700K	20°	White	1031	8.2	126
			1492	11.8	126
			1900	15.5	123
		Black	1005	8.2	123
			1454	11.8	123
			1851	15.5	119
	42	White	1040	8.5	122
			1531	12.1	127
			1993	16.1	124
		Black	926	8.5	109
			1364	12.1	113
			1775	16.1	110
	67	White	994	8.5	117
			1463	12.1	121
			1904	16.1	118
		Black	882	8.5	104
			1299	12.1	107
			1690	16.1	105
	ww	White	875	8.5	103
			1265	12.1	105
			1611	16.1	100
3000K	20°	White	1052	8.2	128
			1522	11.8	129
			1938	15.5	125
		Black	1026	8.2	125
			1483	11.8	126
			1889	15.5	122
	42	White	1061	8.5	125
			1562	12.1	129
			2033	16.1	126
		Black	945	8.5	111
			1391	12.1	115
			1811	16.1	112
	67	White	1014	8.5	119
			1493	12.1	123
			1943	16.1	121
		Black	900	8.5	106
			1325	12.1	110
			1724	16.1	107
	ww	White	893	8.5	105
			1291	12.1	107
			1644	16.1	102
4000K	20°	White	1074	8.2	131
			1553	11.8	132
			1977	15.5	128
		Black	1046	8.2	128
			1513	11.8	128
			1927	15.5	124
	42	White	1083	8.5	127
			1594	12.1	132
			2074	16.1	129
		Black	964	8.5	113
			1419	12.1	117
			1847	16.1	115
	67	White	1035	8.5	122
			1523	12.1	126
			1982	16.1	123
		Black	918	8.5	108
			1351	12.1	112
			1759	16.1	109
	ww	White	911	8.5	107
			1317	12.1	109
			1677	16.1	104

PRODUCT CODE STRUCTURE

Luminaire Family	Sustainable code	Power	CCT	CRI	Distribution	Product Finish
VIR	3D	8.2W - 008 11.8W - 012 15.5W - 015	2700K - 27K 3000K - 30K 4000K - 40K	90 CRI - 90C	20° - S 42° - M 67° - W WW - Z	WHWH WHBL BLWH BLBL <small>WH - White RAL9016 BL-Black RAL9005</small> <small>First 2 digits are for Body and Next two digits are for reflectors</small>
Accessories	Driver					
Honeycomb - H Null - N	Switched - N 0-10 Dim. - 0 DALI - D					

Code Example : **VIR3D00830K90CSWHWHNN**

For any other RAL number from Classic RAL range, replace WH/BL with RAL code (4 digits)

